



TENDER DOSSIER

FOR

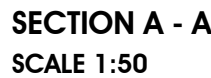
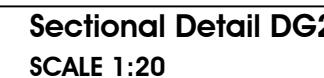
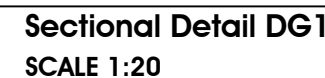
THE CONSTRUCTION AND SUPPLY

OF

**HAWKERS' STALLS IN LUSIKISIKI, INGQUZA HILL LOCAL
MUNICIPALITY, SOUTH AFRICA**

TENDER REFERENCE: NETS_EC_2

PART. 5- DRAWINGS



SHOPFRT NO:	NO.RS01
QUANTITY:	4
OVERALL OPENING:	900 (W) X 1075 (H)



IRONMONGERY:	STANDARD - AS SUPPLIED
DESCRIPTION:	GALVANIZED STEEL ROLLER SHUTTER DOOR Solid slat, manually operated
FINISH:	

GENERAL NOTES:
(1.) CHECK ALL DIMENSIONS AND LEVELS BEFORE COMMENCING ANY WORK.
(2.) FIGURED DIMENSIONS TO BE TAKEN IN PREFERENCE TO SCALED MEASUREMENTS. .
(3.) WALL CONNECTIONS TO BE BUILT UP AT 45 deg. & NOT LEFT OPEN OR FILLED UP WITH BRICKS
(4.) ANY QUERIES TO BE BROUGHT TO THE ARCHITECTS

ATTENTION:
ALL CAVITIES BELOW DVC'S LEVEL MUST BE FILLED WITH CONCRETE. ALL CONDUITS, TIMBER, PVC ETC. SHOULD BE SABS APPROVED QUALITY MATERIALS AND CONDUITS ARE TO BE CHASED, CAST INTO CONCRETE OR BUILT IN TO BRICKWORK.
ALL STRUCTURAL STEEL, CONCRETE STRENGTH AND TIMBER SPECIFICATION ARE TO BE IN ACCORDANCE WITH ENGINEERS DETAILS.

ALL PRODUCTS TO COMPLY STRICTLY TO MANUFACTURER'S APPLICATION SPECIFICATIONALL PRODUCTS TO COMPLY WITH SABS (SOUTH AFRICAN BUREU OF STANDARDS)

THE USE OF TRADE NAMES ON THIS DRAWING SIMPLY
SERVES TO INDICATE A STANDARD ACCEPTABLE TO THE
CHIEF DIRECTORATE OF WORKS. OTHER SIMILARLY
APPROVED BRANDS MAY BE USED WITH PRIOR WRITTEN
APPROVAL OF THE CHIEF DIRECTORATE OF WORKS



Architect's & Project Manager

Penthouse 2, Westward Ho, Forbes Avenue, Port Elizabeth
Cell: 071 372 5553 / 082 799 4233, Fax: 086 591 549
allan@bottina-deang-architects.co.za, vuyo@bottina-deang-architects.co.za
website: www.bottina-deang-architects.co.za, Skype I.D: vuyo.bottina

CLIENT : Buyeye Consulting cc

PROJECT : Proposed Kitchen Stalls
DRAWING : Plan, Elevations &
Sections & details

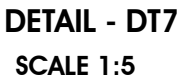
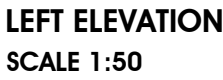
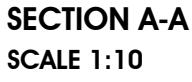
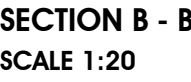
**PRELIMINARY
DRAWING**

THIS PRELIMINARY DRAWING IS FOR PROCEDURAL & ADMINISTRATIVE REVIEW PURPOSES ONLY AND DOES NOT ATTRACT LEGAL LIABILITY & RESPONSIBILITY FROM THE ARCHITECT OF ANY KIND FROM WHATEVER CAUSE OR HOWSOEVER ARISING.

SITE LOCATION :
CONDITION: VACANT
ERF:

ARCHITECT	AM DEANG	ARCHITECT.Drau	VS BOLTIN
REG #:	PrArch 20525	REG #:	PAD 2074

DRAWN BY	B2D ARCH.	SIGNATURE
DATE	09 - 09 - 2011
DATE REVISED	28 - 09 - 2011	SIGNATURE
SCALE	AS SHOWN
DWG NO :	OWNER SIGN	DATE
ARG 1-40/2/REV2



ITEM SCHEDULE			
	No.	m ²	%
STALL TYPE 1 (SINGLE SIDED)	-	-	-
STALL TYPE 1 (DOUBLE SIDED)	-	-	-
TABLE TYPE 1 (DOUBLE)	-	-	-
TABLE TYPE 1 (SINGLE)	-	-	-
BENCH TYPE 1 (SINGLE BENCH)	-	-	-
BENCH TYPE 1 (DOUBLE BENCH)	-	-	-

GENERAL NOTES:
(1.) CHECK ALL DIMENSIONS AND LEVELS BEFORE COMMENCING ANY WORK.
(2.) FIGURED DIMENSIONS TO BE TAKEN IN PREFERENCE TO SCALED MEASUREMENTS.
(3.) WALL CONNECTIONS TO BE BUILT UP AT 45 deg. & NOT LEFT OPEN OR FILLED UP WITH BRICKS
(4.) ANY QUERIES TO BE BROUGHT TO THE ARCHITECTS

ATTENTION:
ALL CAVITIES BELOW DPC LEVEL MUST BE FILLED WITH CONCRETE. ALL CONDUITS, TIMBER, PVC ETC. SHOULD BE SABS APPROVED QUALITY MATERIALS AND CONDUIT ARE TO BE CHASED, CAST INTO CONCRETE OR BUILT IN TO BRICKWORK.
ALL STRUCTURAL STEEL, CONCRETE STRENGTH AND TIMBER SPECIFICATION ARE TO BE IN ACCORDANCE WITH ENGINEERS DETAILS.

ALL PRODUCTS TO COMPLY STRICTLY TO MANUFACTURER'S APPLICATION SPECIFICATIONALL PRODUCTS TO COMPLY WITH SABS (SOUTH AFRICAN BUREU OF STANDARDS)

SERVES TO INDICATE A STANDARD ACCEPTABLE TO THE CHIEF DIRECTORATE OF WORKS. OTHER SIMILARLY APPROVED BRANDS MAY BE USED WITH PRIOR WRITTEN APPROVAL OF THE CHIEF DIRECTORATE OF WORKS



Architect's & Project Managers

Penthouse 2, Westward Ho, Forbes Avenue, Port Elizabeth
Cell: 071 372 5553 / 082 799 4233, Fax: 086 591 5493
allan@boltina-deang-architects.co.za, vuyo@boltina-deang-architects.co.za
website: www.boltina-deang-architects.co.za, Skype I.D: vuyo.boltina

CLIENT : Buyeye Consulting cc

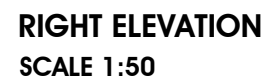
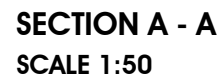
PROJECT : Proposed Chichen Stalls
DRAWING : Plans, Elevations &
Sections

PRELIMINARY DRAWING

THIS PRELIMINARY DRAWING IS FOR PROCEDURAL & ADMINISTRATIVE REVIEW
PURPOSES ONLY AND DOES NOT ATTRACT LEGAL LIABILITY & RESPONSIBILITY
FROM THE ARCHITECT OF ANY KIND FROM WHATEVER CAUSE OR HOWEVER
ARISING.

SITE LOCATION :
CONDITION: VACANT
ERF:

DRAWN BY	B2D ARCH.	SIGNATURE
DATE	09 - 09 - 2011	*****
DATE REVISED	28 - 09 - 2011	SIGNATURE
SCALE	AS SHOWN	*****
DWG NO :	OWNER SIGN	DATE
ARG 1-40/2/REV2	*****	*****



AREA SCHEDULE

GENERAL NOTES

- (1.) CHECK ALL DIMENSIONS AND LEVELS BEFORE COMMENCING ANY WORK.
- (2.) FIGURED DIMENSIONS TO BE TAKEN IN PREFERENCE TO SCALED MEASUREMENTS.
- (3.) WALL CONNECTIONS TO BE BUILT UP AT 45 deg. AND NOT LEFT OPEN OR FILLED UP WITH BRICKS
- (4.) ANY QUERIES TO BE BROUGHT TO THE ARCHITECT'S

ATTENTION:
ALL CAVITIES BELOW DPC LEVEL MUST BE FILLED WITH CONCRETE. ALL CONDUITS, TIMBER, PVC ETC. SHOULD BE SABS APPROVED QUALITY MATERIALS AND CONDUIT ARE TO BE CHASED, CAST INTO CONCRETE OR BUILT IN TO BRICKWORK.
ALL STRUCTURAL STEEL, CONCRETE STRENGTH AND TIMBER SPECIFICATION ARE TO BE IN ACCORDANCE WITH ENGINEERS' DETAILS.

ALL PRODUCTS TO COMPLY STRICTLY TO MANUFACTURER'S APPLICATION SPECIFICATION ALL PRODUCTS TO COMPLY WITH SABS (SOUTH AFRICAN BUREU OF STANDARDS)

THE USE OF TRADE NAMES ON THIS DRAWING SIMPLY
SERVES TO INDICATE A STANDARD ACCEPTABLE TO THE
CHIEF DIRECTORATE OF WORKS. OTHER SIMILARLY
APPROVED BRANDS MAY BE USED WITH PRIOR WRITTEN
APPROVAL OF THE CHIEF DIRECTORATE OF WORKS



Penthouse 2, Westward Ho, Forbes Avenue, Port Elizabeth
Cell: 071 372 5553 / 082 799 4233, Fax: 086 591 5493
allan@boltina-deang-architects.co.za, vuyo@boltina-deang-architects.co.za
website: www.boltina-deang-architects.co.za, Skype I.D: vuyo.boltina

CLIENT : Buyeye Consulting cc

PROJECT : Proposed Live Stock Stalls
DRAWING : Plan, Elevations, Section
& Details

THIS PRELIMINARY DRAWING IS FOR PROCEDURAL & ADMINISTRATIVE REVIEW
PURPOSES ONLY AND DOES NOT ATTRACT LEGAL LIABILITY & RESPONSIBILITY
FROM THE ARCHITECT OF ANY KIND FROM WHATEVER CAUSE OR HOWEVER
ARISING.

SITE LOCATION :
CONDITION: VACANT
ERF:

[illegible]

diagonal ties as per specification.

2 x H-Section Columns braced with diagonal ties.
 flat plate with web stiffeners if required at top to
 take IPE rafter and column base plates bolted
 with holding down bolts onto concrete base slab
 all as per engineer's detail.

See Detail
 CT2 & CS2

Column stiffening gussets welded on base
 plate, bolted with holding down bolts in
 concrete base with grout as per engineer's
 detail

A diagram of a crane boom. The boom is a horizontal beam tilted upwards at an angle of 5 degrees, as indicated by the label "5°" at the top. It is supported by a vertical mast. The mast is composed of two main vertical sections: a solid outer section and a dashed inner section, suggesting a telescopic or hinged structure. The boom has three circular components (possibly pulleys or sensors) spaced along its length. The entire assembly is mounted on a base, which includes a rectangular block on the right side.

A schematic diagram of a crane boom. The boom is a long, narrow rectangular structure tilted at an angle of 5 degrees from the horizontal, as indicated by an arc and the label "5°". Three circular pulleys are mounted along the bottom edge of the boom. A cable is shown running from a fixed point on the ground, passing under the first pulley, then over the second, then under the third, and finally over the fourth pulley (which is at the end of the boom). The cable is attached to a rectangular weight hanging from the end of the boom. The entire system is supported by a vertical mast and a base on the ground.

A diagram showing a square with a dashed inner square, representing a square with a smaller square inside it.

A diagram showing a square with a dashed inner square, representing a square with a smaller square inside it.

CT 2

200

95 10 95

38 x 80mm timber boiler onto precast concrete slab

200mm wide 100mm thick precast concrete slab (as per engineer's detail)

38

100

250

Diagram illustrating a 90° pin hinge assembly. The hinge is shown connecting a vertical door to a horizontal frame. The hinge is labeled "120mm long 100 x 65 x 8mm single angle (unequal legs)". The pin is labeled "25x80mm long .90° pin hinge".

40 x 40 x 8mm padlock plates with 10mm hole.

Technical drawing of a door lock assembly. The drawing shows a cross-section of a door with a lock mechanism. A 40x40x6mm padlock plate is mounted on the door. A 6x50mm flat plate is used as an edging. A 10mm hole is provided for the padlock. The drawing is labeled with dimensions and components:

- 40
- Welded
- 40x40x6mm padlock plate
- 6x50mm flat plates edging
- 10mm hole for padlock

[illegible]

THE USE OF TRADE NAMES ON THIS DRAWING SIMPLY
SERVES TO INDICATE A STANDARD ACCEPTABLE TO THE
CHIEF DIRECTORATE OF WORKS. OTHER SIMILARLY
APPROVED BRANDS MAY BE USED WITH PRIOR WRITTEN
APPROVAL OF THE CHIEF DIRECTORATE OF WORKS



CLIENT : Buyeye Consulting cc

**PRELIMINARY
DRAWING**

THIS PRELIMINARY DRAWING IS FOR PROCEDURAL & ADMINISTRATIVE REVIEW
PURPOSES ONLY AND DOES NOT ATTRACT LEGAL LIABILITY & RESPONSIBILITY
FROM THE ARCHITECT OF ANY KIND FROM WHATEVER CAUSE OR HOWEVER
ARISING.

DRAWN BY	B2D ARCH.	SIGNATURE
DATE	09 - 09 - 2011	*****
DATE REVISED	27 - 09 - 2011	SIGNATURE
SCALE	AS SHOWN	*****
DWG NO :	OWNER SIGN	DATE
ARG 1-40(2)/REV1	*****	*****